

Accounts Receivable

Take More Control of Your Financial Information

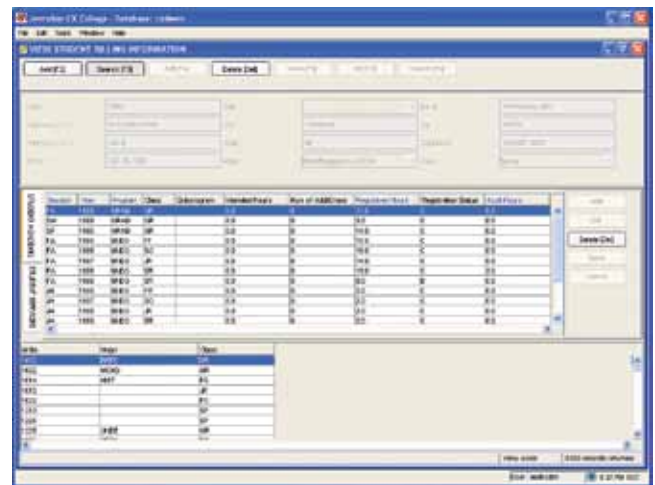
Jenzabar CX Accounts Receivable gives you increased control over your institution's receivables and financial information, enabling you to manage student receivables, cash flow, financial aid disbursements, payment transactions, and account collections more effectively than ever before. Complete integration between Jenzabar CX Accounts Receivable and Jenzabar CX General Ledger allows for secure, accurate subsidiary ledger control. Further, the fully-integrated Jenzabar CX modules for Student Registration, Student Life, Financial Aid, and Payroll allow for tight coordination unique to the generation of all student charges and fees, financial aid disbursements, and payroll deductions. As one module within a fully integrated Business Office suite, Jenzabar CX Accounts Receivable lets you access account balances quickly and easily, so you can build strong constituent relationships by responding promptly to questions and staying in touch.

Statement & Balance Management

- Flexible Statement Formats to support your institution's layout
- Run statements for one or more accounts at any given time for a specific group of students or by specific account activity
- Track past-due balances and send out reminder statements
- Generate and view aging reports and accounts receivable summaries

Dynamic Receivable Management

- Enter charges and payments from any authorized campus office
- Create charges and fees and adjustments as changes occur in registrations
- Receive automatic flow of financial aid disbursements to be posted to accounts
- Place holds on student accounts preventing registration, transcripts, or grades from being issued to overdue accounts
- Import transactions from outside sources
- Track and send notices to overdue accounts
- Tag and process accounts as "Sent to Collections"



Accounts Receivable: Student Billing Information Window

Efficient Receipt Management

- Create numbered receipts
- View and record notes regarding payments
- Apply priority of payments to charges to track any charges and/or fees still owed by students
- Relieve account balances automatically

Additional Functions & Features

- Flexible charge generation and refund rules based on your policies
- Total account balance owed and open or unpaid line item tracking

- Allows for multiple subsidiary creation for all of your financial receivable needs
- Finance charge generation by subsidiary account based on account balances and your institution's policies
- Electronic filing of 1098-T forms
- Provides combined course and fee statements
- Supports Payment Plans
- Supports automatic payroll deductions
- Comprehensive report creation and review
- Ability for students to obtain account information via the Web, using optional Jenzabar CRM Student module

Streamline Operations with Jenzabar CX

Offered on the UNIX® platform with a Java® user interface, Jenzabar CX enables every office on campus to access, update, and store crucial data more easily and efficiently. Authorized users share real-time information across administrative and academic departments, helping you to streamline operations and optimize your business processes.

- ▶ Shared database eliminates duplicate work, increasing administrative productivity and accuracy
- ▶ Powerful reporting tools provide end-user access to essential information and processes
- ▶ Student information is tracked from applicant stage through alumni/ae stage, supporting student success

From Admissions to Advancement, Jenzabar CX helps you deliver prompt, personalized service to prospects, students, alumni, families, and friends.

A Complete Set of Jenzabar CX Modules

Jenzabar CX offers a complete set of fully integrated modules to help manage your student information and business office data—each sharing a common database and standard user interface.

- ▶ Accounts Payable & Purchasing ▶ **Accounts Receivable**
- ▶ Admissions ▶ Enterprise Reporting ▶ Financial Aid
- ▶ Fixed Assets ▶ General Ledger ▶ Grading & Transcripts
- ▶ Human Resources ▶ Institutional Advancement
- ▶ Loan Processing ▶ Registration ▶ Student Affairs

Build Lifelong Relationships with Jenzabar

You can further extend the functionality of Jenzabar CX through our constituent relationship modules (CRMs), which let you offer Web-based self-service to all constituents. CRMs provide tight integration between Jenzabar CX and our Web portal, Jenzabar's Internet Campus Solution. From applicants to alumni, your constituents can access administrative and academic data anytime, anywhere via the portal—and the data they enter into any Jenzabar CRM is integrated with Jenzabar CX. Jenzabar gives your institution the power to build lifelong relationships with every constituent—so candidates become students, students become graduates, and alumni become donors.

The Jenzabar® Advantage

In today's competitive world, institutions of higher education need every advantage to achieve their mission and goals—from innovative software to strategic expertise and client-tailored services. Find it all in one place, delivered by a strong technology partner dedicated to your success: that's the Jenzabar advantage. Our family of fully integrated products includes:

- ▶ Award-winning, proven ERP systems ▶ Constituent relationship modules & award-winning campus portal ▶ Learning management system ▶ Retention management solution ▶ Institutional intelligence solutions ▶ Continuing education systems

Count on Jenzabar for comprehensive solutions that help you manage data throughout the student lifecycle and across the campus. From Admissions to Advancement, we're with you all the way to maximum success.

Jenzabar, Inc.

Jenzabar, Inc. is a leading provider of enterprise software and services developed exclusively for higher education. With more than 35 years of combined experience offering technology solutions to colleges and universities, Jenzabar is the trusted partner of choice to 700 campuses worldwide, including private liberal arts, state, and community colleges and business, medical, law and other graduate schools.